

---

17 Bold

540pt

Coign

Font Version

1.001

---

---

**47 Bold****48pt**

**Coign is an extensive study of condensed forms based on the Delittle type foundry's Elongated Sans. Delittle's type — extending far beyond the realms of legibility — challenges conventional letterforms, pushing the notion of what is 'condensed' to the absolute limit.**

**A quoin, coyne, coigne or, in this case, Coign, is a wedge-like device used in letterpress printing to lock type and spacing material into place within a chase or directly onto a press.**

**Combining the systematic approach of Adrian Frutiger's Univers and the eccentricities of 19th and 20th century wood type,**

---

---

**47 Bold****48pt**

**Coign offers a vast range of condensed styles that explore how the relationship between counterform and letterspacing can alter the expression and texture of type.**

**Super condensed designs are typically limited to a small range of styles as part of a much larger family, whereas Coign offers 28 styles — comprising of seven weights in four different widths — all of them super condensed.**

---

47 Bold

48pt

UPPERCASE A B C D E F G H I J K L M N O P Q R S T U V W X Y Z

LOWERCASE a b c d e f g h i j k l m n o p q r s t u v w x y z

NUMBERS 0 1 2 3 4 5 6 7 8 9

EXTENDED NUMBERS\* 0 1 2 3 4 5 6 7 8 9 0 1 2 3 4 5 6 7 8 9 0 1 2 3 4 5 6 7 8 9

H 0 1 2 3 4 5 6 7 8 9 H 0 1 2 3 4 5 6 7 8 9 H 0 1 2 3 4 5 6 7 8 9 H 0 1 2 3 4 5 6 7 8 9

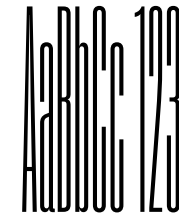
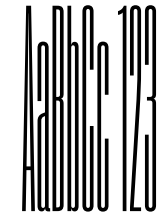
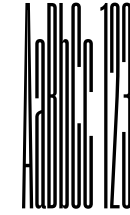
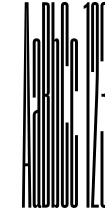
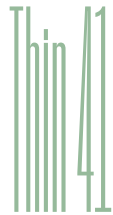
\*PRO VERSIONS ONLY





Family Extent

Thin Widths



---

Family Extent

**Extralight  
Widths**

Extralight 10  
Extralight 12

AaBbCc 100  
AaBbCc 120

Extralight 00  
Extralight 22

AaBbCc 100  
AaBbCc 120

Extralight 00  
Extralight 02

AaBbCc 100  
AaBbCc 120

Extralight 00  
Extralight 42

AaBbCc 100  
AaBbCc 120

---



---

Family Extent

Light  
Widths

Light 10  
Light 12

Light 20  
Light 22

Light 30  
Light 32

Light 40  
Light 42

AaBbCc 123

AaBbCc 123

AaBbCc 123

AaBbCc 123

---

Family Extent

Regular  
Widths

Regular 14

AaBbCc 123

Regular 24

AaBbCc 123

Regular 34

AaBbCc 123

Regular 44

AaBbCc 123

---

---

Family Extent

Medium  
Widths

Medium 15

AaBbCc 123

Medium 25

AaBbCc 123

Medium 35

AaBbCc 123

Medium 45

AaBbCc 123

---

---

Family Extent

SemiBold  
Widths

SemiBold 16

AaBbCc 123

SemiBold 26

AaBbCc 123

SemiBold 36

AaBbCc 123

SemiBold 46

AaBbCc 123

---

---

Family Extent

SemiBold  
Widths

**Bold 17**

**AaBbCc 123**

**Bold 27**

**AaBbCc 123**

**Bold 37**

**AaBbCc 123**

**Bold 47**

**AaBbCc 123**

---

OpenType  
Features

48pt

Coign PRO includes a variety of OpenType features that enable easier typographic control whilst utilising the typeface.

Proportional  
Numbers

1234567890

1234567890

Tabular  
Numbers

( Pro )

1234567890

1234567890

Oldstyle  
Proportional

( Pro )

1234567890

1234567890

Medium

48pt

Oldstyle  
Tabular

1234567890

1234567890

Inferiors

( Pro )

H1234567890

H<sub>1234567890</sub>

Superiors

( Pro )

H1234567890

H<sup>1234567890</sup>

Denominators

( Pro )

H1234567890

H<sub>1234567890</sub>

Numerators

( Pro )

H1234567890

H<sup>1234567890</sup>

Medium

48pt

Fractions

( Pro )

1/2 34/56 789/1011

1 34 789  
2 56 1011Case Sensitive  
Forms

( Pro )

H·i¿}[] — — · « » ‹ ›

H·i¿}[] — — · « » ‹ ›

Small Capitals

( Pro )

abcdefghijklmnopqrstuvwxyZ

ABCDEFGHIJKLMNopQRSTUVWXYZ

Small Capitals  
from Capitals

( Pro )

ABCDEFGHIJKLMNopQRSTUVWXYZ

ABCDEFGHIJKLMNopQRSTUVWXYZ

Stylistic Set 1

( Pro )

&amp;Qq

&amp;Qq



Medium

48pt

Stylistic Set 2

( Pro )

[1][2][3][4][5][6][7][8][9]

123456789

---

Medium

48pt

STD  
[Standard]

1 Proportional Numbers

2 Ligatures

Medium

48pt

**PRO**  
**[Professional]**

- 1 Proportional Numbers**
- 2 Tabular Numbers**
- 3 Oldstyle Prop. Numbers**
- 4 Oldstyle Tabular Numbers**
- 5 Inferiors**
- 6 Superiors**

- 7 Denominators**
- 8 Numerators**
- 9 Fractions**
- 10 Case Sensitive Forms**
- 11 Small Capitals**
- 12 Small Capitals from Capitals**
- 12 Stylistic Sets**
- SS01 Alternate Forms**
- SS02 Circled Numbers**

47 Bold

30pt

STD  
(Standard)

Afrikaans

Basque

Breton

Catalan

Croatian (Latin)

Czech

Danish

Dutch

English

Estonian

Faroese

Finnish

French

Gaelic

Gagauz (Latin)

German

Hungarian

Icelandic

Indonesian

Irish

Italian

Javanese (Latin)

Kashubian

Latvian

Lithuanian

Malay (Latin)

Moldovan

(Latin)

Norwegian

Polish

Portuguese

Romanian

(Latin)

Sami (Northern,

Inari and Lule)

Sami (Southern)

Serbian (Latin)

Silesian

Slovak

Slovenian

Sorbian

Spanish

Swahili

Swedish

Turkish

Walloon

Welsh

47 Bold

30pt

PRO  
(Professional)

Afrikaans

Basque

Breton

Catalan

Croatian (Latin)

Czech

Danish

Dutch

English

Estonian

Faroese

Finnish

French

Gaelic

Gagauz (Latin)

German

Hungarian

Icelandic

Indonesian

Irish

Italian

Javanese (Latin)

Kashubian

Latvian

Lithuanian

Malay (Latin)

Moldovan

(Latin)

Norwegian

Polish

Portuguese

Romanian

(Latin)

Sami (Northern,  
Inari and Lule)

Sami (Southern)

Serbian (Latin)

Silesian

Slovak

Slovenian

Sorbian

Spanish

Swahili

Swedish

Turkish

Walloon

Welsh



11 Thin

240pt

LOREM IPSUM DOLOR SIT AMET CONSECUTE TUR ADIPISCIUNO ELIT INTERER DIGNISSIM  
LOREM IPSUM DOLOR SIT AMET CONSECUTE TUR ADIPISCIUNO ELIT INTERER DIGNISSIM

tempus consequat vestibulum in tinidunt eget vestibulum nutrum interdum  
tempus consequat vestibulum in tinidunt eget vestibulum nutrum interdum

11 Thin

156pt

LOREM IPSUM DOLOR SIT AMET, CONSECTETUR ADIPISCING ELIT UTERQUE DIAM. CONSEQUENT VESTIBULUM IN TINCidunt  
ORUM. PARSURAS ANTE, CONSECTETUR ADIPISCING ELIT UTERQUE DIAM. CONSEQUENT VESTIBULUM IN TINCidunt

erat Vestibulum utrum interdum diam a quoniam bono quis elit et orci hendrerit fermentum. Morbi dictum purus erat,  
erat Vestibulum utrum interdum diam a quoniam bono quis elit et orci hendrerit fermentum. Morbi dictum purus erat,

vitae elementum erat hendrerit erat. Integer ultricies per diam vel porttentoque venenatis. Nam tempus interdum lacinia  
vitae elementum erat hendrerit erat. Integer ultricies per diam vel porttentoque venenatis. Nam tempus interdum lacinia





21 Thin

640pt

L O R E M I P S U M D O L O R S I  
L O R E M I P S U M D O L O R S I  
L O R E M I P S U M D O L O R S I  
L O R E M I P S U M D O L O R S I

21 Thin

240pt

LOREM IPSUM DOLOR SIT AMET CONSECTETUR ADIPISCING ELIT  
LOREM IPSUM DOLOR SIT AMET CONSECTETUR ADIPISCING ELIT

integer dignissim tempus consequat. Vestibulum in tincidunt  
integer dignissim tempus consequat. Vestibulum in tincidunt

21 Thin

156pt

LOREM IPSUM DOLOR SIT AMET, CONSECTETUR ADIPISCING ELIT. INTEGER DUISMUSM TEMPUS CONSEQUAT  
LOREM IPSUM DOLOR SIT AMET, CONSECTETUR ADIPISCING ELIT. INTEGER DUISMUSM TEMPUS CONSEQUAT.

Vestibulum in tincidunt eget. Vestibulum rutrum interdum diam auctor. Donec quis elit et nec  
Vestibulum in tincidunt eget. Vestibulum rutrum interdum diam auctor. Donec quis elit et nec

hendipit fermentum. Morbi dictum purus eget. vitae elementum eget hendipit eget. Integer  
hendipit fermentum. Morbi dictum purus eget, vitae elementum eget hendipit eget. Integer

21 Thin

108pt

LOREM IPSUM DOLOR SIT AMET, CONSECTETUR ADIPISCING ELIT. INTERDUM DIAM IPSUM TEMPS CONSECUAT. VESTIBULUM IN TEMPORIT ERAT. VESTIBULUM  
 LOREM IPSUM DOLOR SIT AMET, CONSECTETUR ADIPISCING ELIT. INTERDUM DIAM IPSUM TEMPS CONSECUAT. VESTIBULUM IN TEMPORIT ERAT. VESTIBULUM

PUTUM INTERDUM DIAM A QUATOR. DOLOR QUIS ELIT ET ORCI HENDRERIT FERMENTUM. MORBI DIETUM PURUS ERAT, VITAE ELEMENTUM ERAT HENDRERIT  
 PUTUM INTERDUM DIAM A QUATOR. DOLOR QUIS ELIT ET ORCI HENDRERIT FERMENTUM. MORBI DIETUM PURUS ERAT, VITAE ELEMENTUM ERAT HENDRERIT

ERAT. INTERDUM VILAMORPER DIAM VEL PELLANTISQUE VONONATIS. NAM TEMPOR INTERDUM HENDRERIT. SED VESTIBULUM ANIM SED VIVERRA DIETUM. PLOIN  
 ERAT. INTERDUM VILAMORPER DIAM VEL PELLANTISQUE VONONATIS. NAM TEMPOR INTERDUM HENDRERIT. SED VESTIBULUM ANIM SED VIVERRA DIETUM. PLOIN

SEMPER FIGURA ERAT IPSUM DOLORIBUS TINCIDUNT. PRORSERIT EU DIETUM ANIM, AC DOLORIBUS LIBERO. MORBI SIT AMET ELIT AC HENDRERIT SUSCIPIT QUIEMOD  
 SEMPER FIGURA ERAT IPSUM DOLORIBUS TINCIDUNT. PRORSERIT EU DIETUM ANIM, AC DOLORIBUS LIBERO. MORBI SIT AMET ELIT AC HENDRERIT SUSCIPIT QUIEMOD

31 Thin

640pt

L O R E M I P S U M D O L O R  
L O R E M I P S U M D O L O R  
L O R E M I P S U M D O L O R

31 Thin

240pt

LOREM IPSUM DOLOR SIT AMET CONSECTETUR  
LOREM IPSUM DOLOR SIT AMET CONSECTETUR

adipiscing elit integer dignissim tempus consequat  
adipiscing elit integer dignissim tempus consequat

31 Thin

156pt

LOREM IPSUM DOLOR SIT AMET, CONSECTETUR ADIPISCING ELIT INTEGER DIGNISSIM  
LOREM IPSUM DOLOR SIT AMET, CONSECTETUR ADIPISCING ELIT INTEGER DIGNISSIM

tempus consequat. Vestibulum in tincidunt erat. Vestibulum rutrum interdum  
tempus consequat. Vestibulum in tincidunt erat. Vestibulum rutrum interdum

diam auctor. Donec quis elit et orci hendrerit fermentum. Morbi dictum  
diam auctor. Donec quis elit et orci hendrerit fermentum. Morbi dictum



31 Thin

108pt

LOREM IPSUM DOLOR SIT AMET, CONSECTETUR ADIPISCING ELIT. INTEGER DIGNISSIM TEMPIUS CONSEQUAT. VESTIBULUM IN  
 tincidunt erat. Vestibulum rutrum interdum diam a auctor. Donec quis elit et orci hendrerit fermentum. Morbi  
 dictum purus erat, vitae elementum erat hendrerit eget. Integer ullamcorper diam vel pellentesque venenatis.  
 Nam tempor interdum lacinia. Sed vestibulum enim sed viverra dictum. Proin semper ligula eget ipsum dapibus

41 Thin

640pt

LOREM IPSUM

41 Thin

240pt

LOREM IPSUM DOLOR SIT AMET CONSECTETUR  
LOREM IPSUM DOLOR SIT AMET CONSECTETUR

adipiscing elit integer dignissim tempus  
adipiscing elit integer dignissim tempus

41 Thin

156pt

LOREM IPSUM DOLOR SIT AMET, CONSECTETUR ADIPISCING ELIT INTEGER

dignissim tempus consequat. Vestibulum in tincidunt erat.

Vestibulum rutrum interdum diam auctor. Donec quis elit et orci

41 Thin

108pt

LOREM IPSUM DOLOR SIT AMET, CONSECTETUR ADIPISCING ELIT. INTEGER DIGNISSIM TEMPUS CONSEQUAT.

Vestibulum in tincidunt erat. Vestibulum rutrum interdum diam a auctor. Donec quis elit et orci

hendrerit fermentum. Morbi dictum purus erat, vitae elementum erat hendrerit eget. Integer

ullamcorper diam vel pellentesque venenatis. Nam tempor interdum lacinia. Sed vestibulum

12 Extralight

640pt

LOREM IPSUM DOLOR  
LOREM IPSUM DOLOR

---

12 Extralight

240pt

LOREM IPSUM DOLOR SIT AMET CONSECTETUR ADIPISCING  
LOREM IPSUM DOLOR SIT AMET CONSECTETUR ADIPISCING

elit integer dignissim tempus consequat Vestibulum  
elit integer dignissim tempus consequat Vestibulum

---

---

12 Extralight

156pt

LOREM IPSUM DOLOR SIT AMET, CONSECTETUR ADIPISCING ELIT INTERER DIGNISSIM TEMPUS  
LOREM IPSUM DOLOR SIT AMET, CONSECTETUR ADIPISCING ELIT INTERER DIGNISSIM TEMPUS

consequat. Vestibulum in tincidunt erat. Vestibulum rutrum interdum diam auctor.  
consequat. Vestibulum in tincidunt erat. Vestibulum rutrum interdum diam auctor.

Donec quis elit et orci hendrerit fermentum. Morbi dictum purus erat, vitae elementum  
Donec quis elit et orci hendrerit fermentum. Morbi dictum purus erat, vitae elementum

---



12 Extralight

108pt

LOREM IPSUM DOLOR SIT AMET, CONSECTETUR ADIPISCING ELIT. INTER DUISMUSI TEMPUS CONSEQUAT. VESTIBULUM MI TINCIDUNT ERAT.  
LOREM IPSUM DOLOR SIT AMET, CONSECTETUR ADIPISCING ELIT. INTER DUISMUSI TEMPUS CONSEQUAT. VESTIBULUM MI TINCIDUNT ERAT.

Vestibulum rutrum interdum diam a duator. Donec quis elit et orci hendepit fermentum. Morbi dictum purus eget, vitae

elementum erat hendepit eget. Integer ullamcorper diam vel pellentesque venenatis. Nam tempor interdum lacinia. Sed

vestibulum enim sed viverra dictum. Proin semper ligula eget ipsum dapibus tincidunt. Praesent eu dictum enim, ac dapibus

---

22 Extralight

640pt

LOREM IPSUM

---

---

22 Extralight

240pt

LOREM IPSUM DOLOR SIT AMET CONSECTETUR  
LOREM IPSUM DOLOR SIT AMET CONSECTETUR

adipiscing elit integer dignissim tempus  
adipiscing elit integer dignissim tempus

---

---

22 Extralight

156pt

LOREM IPSUM DOLOR SIT AMET, CONSECTETUR ADIPISCING ELIT INTEGER  
LOREM IPSUM DOLOR SIT AMET, CONSECTETUR ADIPISCING ELIT INTEGER

dignissim tempus consequat. Vestibulum in tincidunt erat. Vestibulum  
dignissim tempus consequat. Vestibulum in tincidunt erat. Vestibulum

rutrum interdum diam a auctor. Donec quis elit et orci hendrerit  
rutrum interdum diam a auctor. Donec quis elit et orci hendrerit

---

---

22 Extralight

108pt

LOREM IPSUM DOLOR SIT AMET, CONSECTETUR ADIPISCING ELIT. INTEGER DIGNISSIM TEMPUS CONSEQUAT.

Vestibulum in tincidunt erat. Vestibulum rutrum interdum diam a auctor. Donec quis elit et orci

hendrerit fermentum. Morbi dictum purus erat, vitae elementum erat hendrerit eget. Integer

ullamcorper diam vel pellentesque venenatis. Nam tempor interdum lacinia. Sed vestibulum enim sed

---

32 Extralight

640pt

LOREM IPSUM

---

32 Extralight

240pt

LOREM IPSUM DOLOR SIT AMET  
LOREM IPSUM DOLOR SIT AMET

consectetur adipiscing elit integer  
consectetur adipiscing elit integer

---

---

32 Extralight

156pt

LOREM IPSUM DOLOR SIT AMET, CONSECTETUR ADIPISCING  
LOREM IPSUM DOLOR SIT AMET, CONSECTETUR ADIPISCING

elit integer dignissim tempus consequat. Vestibulum in

incidunt erat. Vestibulum rutrum interdum diam a auctor.

---



---

32 Extralight

108pt

LOREM IPSUM DOLOR SIT AMET, CONSECTETUR ADIPISCING ELIT. INTEGER DIGNISSIM TEMPUS  
consequat. Vestibulum in tincidunt erat. Vestibulum rutrum interdum diam a auctor.  
Donec quis elit et orci hendrerit fermentum. Morbi dictum purus erat, vitae  
elementum erat hendrerit eget. Integer ullamcorper diam vel pellentesque venenatis.

---

42 Extralight

640pt

LOREM IPSUM

---

42 Extralight

240pt

LOREM IPSUM DOLOR SIT AMET

consectetur adipiscing elit

---

---

42 Extralight

156pt

LOREM IPSUM DOLOR SIT AMET, CONSECTETUR

adipiscing elit integer dignissim tempus consequat.

Vestibulum in tincidunt erat. Vestibulum rutrum

---

---

42 Extralight

108pt

LOREM IPSUM DOLOR SIT AMET, CONSECTETUR ADIPISCING ELIT. INTEGER DIGNISSIM

tempus consequat. Vestibulum in tincidunt erat. Vestibulum rutrum

interdum diam auctor. Donec quis elit et orci hendrerit fermentum.

Morbi dictum purus erat, vitae elementum erat hendrerit eget. Integer

---

13 Light

640pt

LOREM IPSUM

13 Light

240pt

LOREM IPSUM DOLOR SIT AMET CONSECTETUR  
LOREM IPSUM DOLOR SIT AMET CONSECTETUR

adipiscing elit integer dignissim tempus  
adipiscing elit integer dignissim tempus

---

13 Light

156pt

LOREM IPSUM DOLOR SIT AMET, CONSECTETUR ADIPISCING ELIT INTEGER

dignissim tempus consequat. Vestibulum in tincidunt erat. Vestibulum

rutrum interdum diam auctor. Donec quis elit et orci hendrerit

---



13 Light

108pt

LOREM IPSUM DOLOR SIT AMET, CONSECTETUR ADIPISCING ELIT. INTEGER DIGNISSIM TEMPUS CONSEQUAT.

Vestibulum in tincidunt erat. Vestibulum rutrum interdum diam a auctor. Donec quis elit et orci

hendrerit fermentum. Morbi dictum purus erat, vitae elementum erat hendrerit eget. Integer

ullamcorper diam vel pellentesque venenatis. Nam tempor interdum lacinia. Sed vestibulum enim

23 Light

640pt

**LOREM IPSUM**

---

23 Light

240pt

LOREM IPSUM DOLOR SIT AMET

consectetur adipiscing elit integer

---

23 Light

156pt

LOREM IPSUM DOLOR SIT AMET, CONSECTETUR ADIPISCING

elit integer dignissim tempus consequat. Vestibulum

in tincidunt erat. Vestibulum rutrum interdum diam a

---

23 Light

108pt

LOREM IPSUM DOLOR SIT AMET, CONSECTETUR ADIPISCING ELIT. INTEGER DIGNISSIM TEMPUS  
consequat. Vestibulum in tincidunt erat. Vestibulum putrum interdum diam a  
auctor. Donec quis elit et orci hendrerit fermentum. Morbi dictum purus erat,  
vitae elementum erat hendrerit eget. Integer ullamcorper diam vel pellentesque

33 Light

640pt

LOREM IPSUM -

---

---

33 Light

240pt

LOREM IPSUM DOLOR SIT AMET

CONSECTETUR ADIPISCING ELIT

---

---

33 Light

156pt

LOREM IPSUM DOLOR SIT AMET, CONSECTETUR

adipiscing elit integer dignissim tempus

consequat. Vestibulum in tincidunt erat.

---



---

33 Light

108pt

LOREM IPSUM DOLOR SIT AMET, CONSECTETUR ADIPISCING ELIT. INTEGER  
dignissim tempus consequat. Vestibulum in tincidunt erat. Vestibulum  
rutrum interdum diam a auctor. Donec quis elit et orci hendrerit  
fermentum. Morbi dictum purus erat, vitae elementum erat hendrerit

---

43 Light

640pt

LOREM IPS.

---

43 Light

240pt

LOREM IPSUM DOLOR SIT

amet consectetur

---

---

43 Light

156pt

LOREM IPSUM DOLOR SIT AMET, CONSECTETUR

adipiscing elit integer dignissim tempus

consequat. Vestibulum in tincidunt erat.

---

43 Light

108pt

LOREM IPSUM DOLOR SIT AMET, CONSECTETUR ADIPISCING ELIT.

Integer dignissim tempus consequat. Vestibulum in tincidunt

erat. Vestibulum rutrum interdum diam a auctor. Donec

quis elit et orci hendrerit fermentum. Morbi dictum

14 Regular

640pt

LOREM IPSUM

14 Regular

240pt

LOREM IPSUM DOLOR SIT AMET

consectetur adipiscing elit integer

---

14 Regular

156pt

LOREM IPSUM DOLOR SIT AMET, CONSECTETUR ADIPISCING ELIT

integer dignissim tempus consequat. Vestibulum in

truncidunt erat. Vestibulum rutrum interdum diam a

---



---

14 Regular

108pt

LOREM IPSUM DOLOR SIT AMET, CONSECTETUR ADIPISCING ELIT. INTEGER DIGNISSIM TEMPUS  
consequat. Vestibulum in tincidunt erat. Vestibulum rutrum interdum diam a  
auctor. Donec quis elit et orci hendrerit fermentum. Morbi dictum purus erat,  
vitae elementum erat hendrerit eget. Integer ullamcorper diam vel pellentesque

---

14 Regular

72pt

LOREM IPSUM DOLOR SIT AMET, CONSECTETUR ADIPISCING ELIT. INTEGER DNEISSIM TEMPUS CONSEQUAT. VESTIBULUM IN TINCIDUNT ERAT.

Vestibulum putrum interdum diam a auctor. Donec quis elit et orci hendrerit fermentum. Morbi dictum purus erat, vitae

elementum erat hendrerit eget. Integer ullamcorper diam vel pellentesque venenatis. Nam tempor interdum lacinia. Sed

vestibulum enim sed viverra dictum. Proin semper ligula eget ipsum dapibus tincidunt. Praesent eu dictum enim, ac dapibus

libera. Morbi sit amet elit ac lorem suscipit euismod. Quisque convallis dictum vulputate. Vestibulum odio erat, ultrices in

interdum et, malesuada Integer ullamcorper diam vel pellentesque venenatis. Nam tempor interdum lacinia. Sed vestibulum

24 Regular

640pt

LOREM IPSUM -

---

24 Regular

240pt

LOREM IPSUM DOLOR SIT AMET

CONSECTETUR ADIPISCING ELIT

---

24 Regular

156pt

LOREM IPSUM DOLOR SIT AMET, CONSECTETUR

adipiscing elit integer dignissim tempus

consequat. Vestibulum in tincidunt erat.

---

---

24 Regular

108pt

LOREM IPSUM DOLOR SIT AMET, CONSECTETUR ADIPISCING ELIT. INTEGER

dignissim tempus consequat. Vestibulum in tincidunt erat.

Vestibulum rutrum interdum diam a auctor. Donec quis elit et orci

hendrerit fermentum. Morbi dictum purus erat, vitae elementum

---

24 Regular

72pt

LOREM IPSUM DOLOR SIT AMET, CONSECTETUR ADIPISCING ELIT. INTEGER DIGNISSIM TEMPUS CONSEQUAT.  
Vestibulum in tincidunt erat. Vestibulum rutrum interdum diam a auctor. Donec quis elit et orci  
hendrerit fermentum. Morbi dictum purus erat, vitae elementum erat hendrerit eget. Integer  
ullamcorper diam vel pellentesque venenatis. Nam tempor interdum lacinia. Sed vestibulum enim sed  
viverra dictum. Proin semper ligula eget ipsum dapibus tincidunt. Praesent eu dictum enim, ac dapibus  
libero. Morbi sit amet elit ac lorem suscipit euismod. Quisque convallis dictum vulputate. Vestibulum

34 Regular

640pt

LOREM IPS

---



---

34 Regular

240pt

LOREM IPSUM DOLOR SIT

amet consectetur

---

---

34 Regular

156pt

LOREM IPSUM DOLOR SIT AMET,

consectetur adipiscing elit integer

dignissim tempus consequat. Vestibulum

---

---

34 Regular

108pt

LOREM IPSUM DOLOR SIT AMET, CONSECTETUR ADIPISCING ELIT.

Integer dignissim tempus consequat. Vestibulum in

tincidunt erat. Vestibulum rutrum interdum diam a auctor.

Donec quis elit et orci hendrerit fermentum. Morbi

---

---

34 Regular

72pt

LOREM IPSUM DOLOR SIT AMET, CONSECTETUR ADIPISCING ELIT. INTEGER DIGNISSIM TEMPUS  
consequat. Vestibulum in tincidunt erat. Vestibulum rutrum interdum diam a auctor.  
Donec quis elit et orci hendrerit fermentum. Morbi dictum purus erat, vitae elementum  
erat hendrerit eget. Integer ullamcorper diam vel pellentesque venenatis. Nam tempor  
interdum lacinia. Sed vestibulum enim sed viverra dictum. Proin semper ligula eget  
ipsum dapibus tincidunt. Praesent eu dictum enim, ac dapibus libero. Morbi sit amet elit

---

44 Regular

640pt

LOREM

---

---

44 Regular

240pt

LOREM IPSUM DOLOR SIT

amet consectetur

---

---

44 Regular

156pt

LOREM IPSUM DOLOR SIT AMET,  
consectetur adipiscing elit integer  
dignissim tempus consequat.

---

---

44 Regular

108pt

LOREM IPSUM DOLOR SIT AMET, CONSECTETUR

adipiscing elit. Integer dignissim tempus

consequat. Vestibulum in tincidunt erat. Vestibulum

putrum interdum diam a auctor. Donec quis elit

---



44 Regular

72pt

LOREM IPSUM DOLOR SIT AMET, CONSECTETUR ADIPISCING ELIT. INTEGER DIGNISSIM  
tempus consequat. Vestibulum in tincidunt erat. Vestibulum rutrum interdum  
diam a auctor. Donec quis elit et orci hendrerit fermentum. Morbi dictum  
purus erat, vitae elementum erat hendrerit eget. Integer ullamcorper diam  
vel pellentesque venenatis. Nam tempor interdum lacinia. Sed vestibulum  
enim sed viverra dictum. Proin semper ligula eget ipsum dapibus tincidunt.

15 Medium

640pt

**LOREM IPS.**

---

---

15 Medium

240pt

LOREM IPSUM DOLOR SIT AMET

consectetur adipiscing elit

---

---

15 Medium

156pt

LOREM IPSUM DOLOR SIT AMET, CONSECTETUR

adipiscing elit integer dignissim tempus

consequat. Vestibulum in tincidunt erat.

---

---

15 Medium

108pt

LOREM IPSUM DOLOR SIT AMET, CONSECTETUR ADIPISCING ELIT. INTEGER  
dignissim tempus consequat. Vestibulum in tincidunt erat.  
Vestibulum rutrum interdum diam a auctor. Donec quis elit et  
orci hendrerit fermentum. Morbi dictum purus erat, vitae

---

15 Medium

72pt

LOREM IPSUM DOLOR SIT AMET, CONSECTETUR ADIPISCING ELIT. INTEGER DIGNISSIM TEMPUS CONSEQUAT. Vestibulum in tincidunt erat. Vestibulum rutrum interdum diam a auctor. Donec quis elit et orci hendrerit fermentum. Morbi dictum purus erat, vitae elementum erat hendrerit eget. Integer ullamcorper diam vel pellentesque venenatis. Nam tempor interdum lacinia. Sed vestibulum enim sed viverra dictum. Proin semper ligula eget ipsum dapibus tincidunt. Praesent eu dictum enim, ac dapibus libero. Morbi sit amet elit ac lorem suscipit euismod. Quisque convallis dictum

25 Medium

640pt

**LOREM IPSUM**

---

---

25 Medium

240pt

LOREM IPSUM DOLOR SIT

amet consectetur

---



---

25 Medium

156pt

LOREM IPSUM DOLOR SIT AMET,

consectetur adipiscing elit integer

dignissim tempus consequat.

---

---

25 Medium

108pt

LOREM IPSUM DOLOR SIT AMET, CONSECTETUR ADIPISCING  
elit. Integer dignissim tempus consequat. Vestibulum  
in tincidunt erat. Vestibulum rutrum interdum diam a  
auctor. Donec quis elit et orci hendrerit fermentum.

---

25 Medium

72pt

LOREM IPSUM DOLOR SIT AMET, CONSECTETUR ADIPISCING ELIT. INTEGER DIGNISSIM TEMPUS consequat. Vestibulum in tincidunt erat. Vestibulum rutrum interdum diam auctor. Donec quis elit et orci hendrerit fermentum. Morbi dictum purus erat, vitae elementum erat hendrerit eget. Integer ullamcorper diam vel pellentesque venenatis. Nam tempor interdum lacinia. Sed vestibulum enim sed viverra dictum. Proin semper ligula eget ipsum dapibus tincidunt. Praesent eu dictum enim, ac

35 Medium

640pt

**LOREM**

---

35 Medium

240pt

LOREM IPSUM DOLOR

sit amet consectetur

---

35 Medium

156pt

LOREM IPSUM DOLOR SIT AMET,  
consectetur adipiscing elit  
integer dignissim tempus

---

---

35 Medium

108pt

LOREM IPSUM DOLOR SIT AMET, CONSECTETUR  
adipiscing elit. Integer dignissim tempus  
consequat. Vestibulum in tincidunt erat.  
Vestibulum rutrum interdum diam a auctor.

---

35 Medium

72pt

LOREM IPSUM DOLOR SIT AMET, CONSECTETUR ADIPISCING ELIT. INTEGER dignissim tempus consequat. Vestibulum in tincidunt erat. Vestibulum rutrum interdum diam a auctor. Donec quis elit et orci hendrerit fermentum. Morbi dictum purus erat, vitae elementum erat hendrerit eget. Integer ullamcorper diam vel pellentesque venenatis. Nam tempor interdum lacinia. Sed vestibulum enim sed viverra dictum. Proin semper



45 Medium

640pt

**LOREM**

---

45 Medium

240pt

LOREM IPSUM DOLOR

sit amet

---

---

45 Medium

156pt

LOREM IPSUM DOLOR SIT AMET,  
consectetur adipiscing elit  
integer dignissim tempus

---

---

45 Medium

108pt

LOREM IPSUM DOLOR SIT AMET, CONSECTETUR  
adipiscing elit. Integer dignissim tempus  
consequat. Vestibulum in tincidunt erat.  
Vestibulum rutrum interdum diam a

---

45 Medium

72pt

LOREM IPSUM DOLOR SIT AMET, CONSECTETUR ADIPISCING ELIT. INTEGER dignissim tempus consequat. Vestibulum in tincidunt erat. Vestibulum rutrum interdum diam a auctor. Donec quis elit et orci hendrerit fermentum. Morbi dictum purus erat, vitae elementum erat hendrerit eget. Integer ullamcorper diam vel pellentesque venenatis. Nam tempor interdum lacinia. Sed

16 SemiBold

640pt

**LOREM P.**

---

16 SemiBold

240pt

LOREM IPSUM DOLOR SIT

amet consectetur

---

16 SemiBold

156pt

LOREM IPSUM DOLOR SIT AMET,

consectetur adipiscing elit integer

dignissim tempus consequat.

---



---

16 SemiBold

108pt

LOREM IPSUM DOLOR SIT AMET, CONSECTETUR ADIPISCING  
elit. Integer dignissim tempus consequat.  
Vestibulum in tincidunt erat. Vestibulum rutrum  
interdum diam a auctor. Donec quis elit et orci

---

16 SemiBold

72pt

LOREM IPSUM DOLOR SIT AMET, CONSECTETUR ADIPISCING ELIT. INTEGER DIGNISSIM  
tempus consequat. Vestibulum in tincidunt erat. Vestibulum rutrum interdum  
diam a auctor. Donec quis elit et orci hendrerit fermentum. Morbi dictum  
purus erat, vitae elementum erat hendrerit eget. Integer ullamcorper diam  
vel pellentesque venenatis. Nam tempor interdum lacinia. Sed vestibulum  
enim sed viverra dictum. Proin semper ligula eget ipsum dapibus tincidunt.

26 SemiBold

640pt

**LOREM**

---

26 SemiBold

240pt

LOREM IPSUM DOLOR

sit amet consectetur

---

26 SemiBold

156pt

LOREM IPSUM DOLOR SIT AMET,  
consectetur adipiscing elit  
integer dignissim tempus

---

26 SemiBold

108pt

LOREM IPSUM DOLOR SIT AMET, CONSECTETUR  
adipiscing elit. Integer dignissim tempus  
consequat. Vestibulum in tincidunt erat.  
Vestibulum rutrum interdum diam auctor.

26 SemiBold

72pt

LOREM IPSUM DOLOR SIT AMET, CONSECTETUR ADIPISCING ELIT. INTEGER dignissim tempus consequat. Vestibulum in tincidunt erat. Vestibulum rutrum interdum diam a auctor. Donec quis elit et orci hendrerit fermentum. Morbi dictum purus erat, vitae elementum erat hendrerit eget. Integer ullamcorper diam vel pellentesque venenatis. Nam tempor interdum lacinia. Sed vestibulum enim sed

36 SemiBold

640pt

**LOREM**

---



36 SemiBold

240pt

LOREM IPSUM

dolor sit amet

---

36 SemiBold

156pt

LOREM IPSUM DOLOR SIT AMET,  
consectetur adipiscing elit  
integer dignissim tempus

---

36 SemiBold

108pt

LOREM IPSUM DOLOR SIT AMET, CONSECTETUR  
adipiscing elit. Integer dignissim tempus  
consequat. Vestibulum in tincidunt erat.  
Vestibulum rutrum interdum diam a

36 SemiBold

72pt

LOREM IPSUM DOLOR SIT AMET, CONSECTETUR ADIPISCING ELIT.  
Integer dignissim tempus consequat. Vestibulum in tincidunt  
erat. Vestibulum rutrum interdum diam a auctor. Donec  
quis elit et orci hendrerit fermentum. Morbi dictum  
purus erat, vitae elementum erat hendrerit eget. Integer  
ullamcorper diam vel pellentesque venenatis. Nam tempor

46 SemiBold

640pt

**LOREM**

---

46 SemiBold

240pt

LOREM IPSUM

dolor sit amet

---

46 SemiBold

156pt

LOREM IPSUM DOLOR SIT

amet, consectetur

adipiscing elit integer

---

46 SemiBold

108pt

LOREM IPSUM DOLOR SIT AMET,  
consectetur adipiscing elit.  
Integer dignissim tempus consequat.  
Vestibulum in tincidunt erat.

---



46 SemiBold

72pt

LOREM IPSUM DOLOR SIT AMET, CONSECTETUR ADIPISCING  
elit. Integer dignissim tempus consequat. Vestibulum  
in tincidunt erat. Vestibulum rutrum interdum diam a  
auctor. Donec quis elit et orci hendrerit fermentum.  
Morbi dictum purus erat, vitae elementum erat  
hendrerit eget. Integer ullamcorper diam vel

17 Bold

640pt

**LOREM**

---

17 Bold

240pt

LOREM IPSUM DOLOR

sit amet consectetur

---

---

17 Bold

156pt

LOREM IPSUM DOLOR SIT AMET,  
consectetur adipiscing elit  
integer dignissim tempus

---

17 Bold

108pt

LOREM IPSUM DOLOR SIT AMET, CONSECTETUR  
adipiscing elit. Integer dignissim tempus  
consequat. Vestibulum in tincidunt erat.  
Vestibulum rutrum interdum diam a

17 Bold

72pt

LOREM IPSUM DOLOR SIT AMET, CONSECTETUR ADIPISCING ELIT. INTEGER dignissim tempus consequat. Vestibulum in tincidunt erat. Vestibulum rutrum interdum diam a auctor. Donec quis elit et orci hendrerit fermentum. Morbi dictum purus erat, vitae elementum erat hendrerit eget. Integer ullamcorper diam vel pellentesque venenatis. Nam tempor interdum lacinia. Sed vestibulum enim sed

17 Bold

48pt

IM ET VOLUPTATUR, TESTIBUS, UT UT LAUT VOLUPTATIBUS ULPARUM VOLOREPERUM NOSANDUNDAM, QUI SED  
 QUE MA QUOS DOUPTATAE SUNDITI NCTUR? GILISQUIA QUATUR? MINT, ET EST AUT FACCUS AUTA VOLUMQUE IDI  
 vid que dus, sitia que il il mo enihil ipictor sitiore perest, odi deseetia serferiaerum ium el etur?  
 Quiaspeditam ut aboreium fuga. Itatur arunda culpa et est, ut quiamus velit labor aut sequi dis  
 as re volum hitiistrum ius que maio velit fugita alicim voluptatur, volor aspicio eiunto et excepel ia-  
 tiaae consed exped ellaborati bernam vella cum fuga. Pid et, voluptus reruptati cum excestiam aut  
 reicae lic tore nos pratia nat. Dolupti simus, temporepudi sapelemtios sedit harcitate rem est la  
 quide cus evella qui omnis soleriorum quam quodi imagnistiis dolupta sperum et ideliat esciis audit  
 ut recture, consequia nobit dolutemperio con nos cum derum qui consequi nonsenda cusdam fuga.

27 Bold

640pt

**LOREM**

---



27 Bold

240pt

**LOREM IPSUM**

**dolor sit amet**

---

---

27 Bold

156pt

LOREM IPSUM DOLOR SIT

amet, consectetur

adipiscing elit integer

---

27 Bold

108pt

**LOREM IPSUM DOLOR SIT AMET,**

**consectetur adipiscing elit.**

**Integer dignissim tempus consequat.**

**Vestibulum in tincidunt erat. Vestibulum**

27 Bold

72pt

**LOREM IPSUM DOLOR SIT AMET, CONSECTETUR ADIPISCING ELIT.  
Integer dignissim tempus consequat. Vestibulum in  
tincidunt erat. Vestibulum rutrum interdum diam a auctor.  
Donec quis elit et orci hendrerit fermentum. Morbi  
dictum purus erat, vitae elementum erat hendrerit eget.  
Integer ullamcorper diam vel pellentesque venenatis. Nam**

27 Bold

48pt

IM ET VOLUPTATUR, TESTIBUS, UT UT LAUT VOLUPTATIBUS ULPARUM VOLOREPERUM NOSANDUNDAM,  
QUI SED QUE MA QUOS DOLUPTATAE SUNDITI NCTUR? GILISQUIA QUATUR? MINT, ET EST AUT FACCUS  
auta volumque idi vid que dus, sitia que il il mo enihil ipictor sitiore perest, odi deseectia  
serferiaerum ium el etur? Quiaspeditam ut aboreium fuga. Itatur arunda nulpia et est,  
ut quiamus vellit labor auta sequi dis as re volum hitiistrum ius que maio velit fugita  
alicim voluptatur, volor aspicio eiunto et excepel iatie conseed exped ellaborati bernam  
vella cum fuga. Pid et, voluptus reruptati cum excestiam aut reicae lic tore nos pratia  
nat. Dolupti simus, temporepudi sapelemtios sedit harcitate rem est la quide cus evella  
qui omnis soleriorum quam quodi imagnistiis dolupta sperum et ideliat esciis audit

37 Bold

640pt

**LOREM**

---

37 Bold

240pt

**LOREM IPSUM**

**dolor sit amet**

---

37 Bold

156pt

**LOREM IPSUM DOLOR SIT**

**amet, consectetur**

**adipiscing elit integer**

---



---

37 Bold

108pt

**LOREM IPSUM DOLOR SIT AMET,  
consectetur adipiscing elit.  
Integer dignissim tempus  
consequat. Vestibulum in tincidunt**

---

37 Bold

72pt

**LOREM IPSUM DOLOR SIT AMET, CONSECTETUR ADIPISCING  
elit. Integer dignissim tempus consequat. Vestibulum  
in tincidunt erat. Vestibulum rutrum interdum diam  
a auctor. Donec quis elit et orci hendrerit  
fermentum. Morbi dictum purus erat, vitae  
elementum erat hendrerit eget. Integer ullamcorper**

37 Bold

48pt

IM ET VOLUPTATUR, TESTIBUS, UT UT LAUT VOLUPTATIBUS ULPARUM VOLOREPERUM  
NOSANDUNDAM, QUI SED QUE MA QUOS DOLUPTATAE SUNDITI NCTUR? CILISQUIA QUATUR?  
Mint, et est aut faccus auta volumque idi vid que dus, sitia que il il mo enihil  
ipictor sitioe perest, odi desectia serferiaerum ium el etur? Quiaspeditam ut  
aboreium fuga. Itatur arunda nulpa et est, ut quiamus vellit labor auta sequi dis  
as re volum hitiistrum ius que maio velit fugita alicim voluptatur, volor aspitio  
eiunto et excepel iatiae consed exped ellaborati bernam vella cum fuga. Pid et,  
voluptus reruptati cum excestiam aut reicae lic tore nos pratia nat. Doluptioni  
simus, temporepudi sapeleptos sedit harcite rem est la quide cus evella qui

47 Bold

640pt

**LORE.**

---

47 Bold

240pt

**LOREM IPSUM**

**dolor sit amet**

---

47 Bold

156pt

**LOREM IPSUM DOLOR SIT**

**amet, consectetur**

**adipiscing elit integer**

---

47 Bold

108pt

**LOREM IPSUM DOLOR SIT AMET,  
consectetur adipiscing elit.  
Integer dignissim tempus  
consequat. Vestibulum in**

47 Bold

72pt

**LOREM IPSUM DOLOR SIT AMET, CONSECTETUR  
adipiscing elit. Integer dignissim tempus  
consequat. Vestibulum in tincidunt erat.  
Vestibulum rutrum interdum diam a auctor.  
Donec quis elit et orci hendrerit fermentum.  
Morbi dictum purus erat, vitae elementum erat**



47 Bold

48pt

IM ET VOLUPTATUR, TESTIBUS, UT UT LAUT VOLUPTATIBUS ULPARUM VOLOREPERUM  
NOSANDUNDAM, QUI SED QUE MA QUOS DOLUPTATAE SUNDITI NCTUR? CILISQUIA  
quatur? Mint, et est aut faccus auta volumque idi vid que dus, sitia que il  
il mo enihil ipictor sitiore perest, odi deseetia serferiaerum ium el etur?  
Quiaspeditam ut aboreium fuga. Itatur arunda nulpa et est, ut quiamus  
vellit labor auta sequi dis as re volum hitiistrum ius que maio velit fugita  
alicim voluptatur, volor aspitio eiunto et excepel iatiae consed exped el-  
laborati bernam vella cum fuga. Pid et, voluptus reruptati cum excestiam  
aut reicae lic tore nos pratia nat. Dolupti simus, temporepudi sapeleontos

## TYPEFACE EXTENT

## 7 Weights, 28 Styles

## STD v PRO

The STD (Standard) version of Coign contains Adobe Latin 3 encoding. The PRO (Professional) version of Coign contains Adobe Latin 3, Adobe Cyrillic 2 and Adobe Greek 1 encodings.

## Desktop Licence

To install the typeface onto a desktop machine or server that distributes to a number of desktop machines, a desktop licence must be purchased.

## Self-hosting Web Font Licence

To embed the typeface onto a website, a self-hosting web font licence must be purchased.

## App Licence

To be able to embed the typeface into an application (desktop, web or app) an App Licence must be purchased.

## Broadcast Licence

To broadcast on TV or Cinema, a broadcasting licence is required and can be purchased via our online shop or directly.

## Enterprise Licence

For larger organisations we offer an enterprise licence, that enables unlimited usage across all touchpoints. Please contact us for further details.

## Designed by

Colophon Foundry, London

## Published by

Colophon Foundry, London  
colophon-foundry.org

## Released

November 2018

## Copyright

© 2018 — All rights reserved.

---

#### Contact Details

Colophon Foundry  
16A Crane Grove  
London, N7 8NN  
United Kingdom

#### Telephone

+44 (0)20 3095 9782

#### Email

abc@colophon-foundry.org

#### About Colophon Foundry

Colophon is an international, award-winning type foundry based in London (UK) and Los Angeles (US). We create, publish, and distribute high-quality retail and custom typefaces for analog and digital media.

Since 2009, Colophon has tasked itself with producing fonts that are composed with aesthetic and technological care, prompting a reputable library of new classics that couple typographic history with contemporary sensibilities. In tandem with its own designs, the foundry hosts original typefaces drawn by influential practitioners from varied design disciplines. The resulting catalogue offers graphic designers and users-of-type a series of indelible digital tools, each with a distinct typographic identity.

In addition to the offerings in our retail inventory, we accept commissions for custom fonts, font families, and logotypes, as well as tailored / bespoke versions of our existing typefaces, including language extensions.

Colophon Foundry's self-initiated and commissioned work in type design is complemented by independent and collaborative initiatives in publishing, editing / curation, exhibition-making, and teaching, with a focus on local and international partnerships with institutions of all sizes.

---

17 Bold

640pt

End Page

Font Version

1.001

---